

HIMALAYA WS3 NORDIC MASTER OF THE NORTH



Confident winter handling & grip

The Himalaya WS3 Nordic handles slushy and snowy roads with ease, mastering all winter conditions with confident tracking stability.



	Features	Advantages	Benefits
1	Optimal compounds	Increased rubber dynamic stiffness	Better fuel efficiency and wet traction
2	Wide v-shaped grooves	Improved water/slush dispersion efficiency	Elevated traction and steering
3	Reinforced center rib	Enhanced tire rigidity and steering stability	Better steering and comfort
4	Specialized shoulder design	Strengthened lateral grip, cornering stability, and noise-reduction efficiency	Safe and comfortable rides



Wet grip



Snow & ice braking



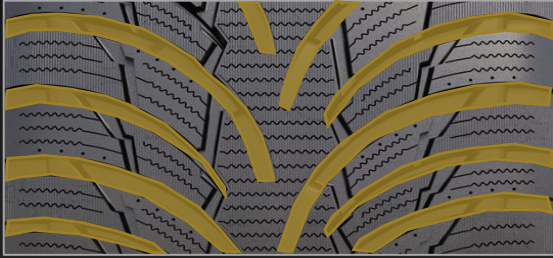
Directional



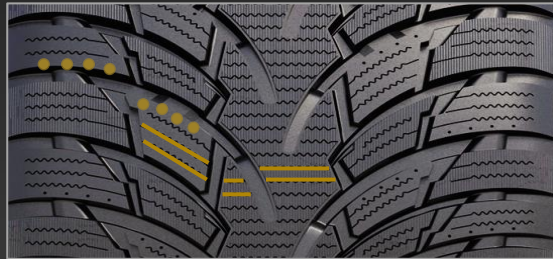
Winter

M+S

Premium tracking stability



Wide v-shaped grooves enhance water dispersion to elevate stability and handling against aquaplaning.



Sipes & micro pumps increase traction on wet and snowy roads.



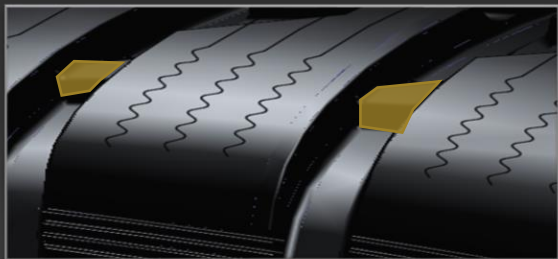
Better mileage & comfort



Optimal compounds with increased rubber dynamic stiffness delivers better stability and fuel efficiency.



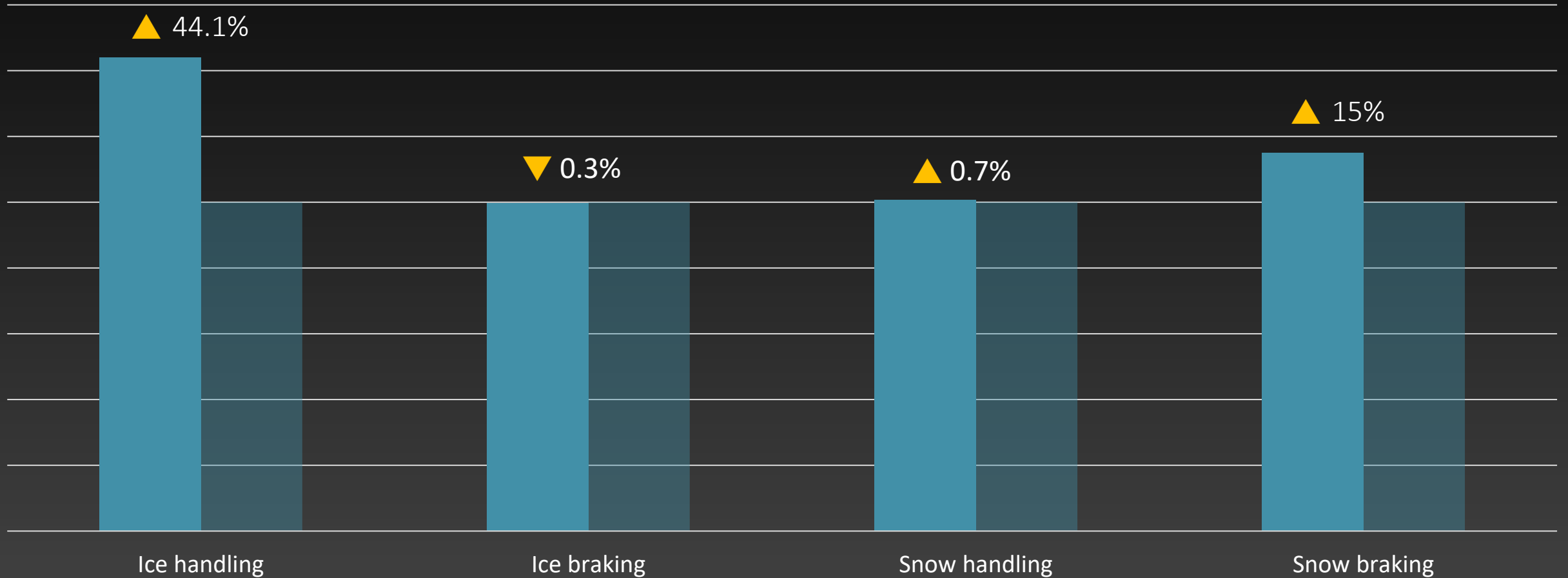
Optimal compounds help improve water/slush dispersion efficiency, delivering confident steering and braking control on snow and ice.



Specialized tire shoulder blocks offer lateral grip for enhanced cornering stability and comfort.



Performance comparison



Initial sizes

15"

- 175/65R15 84Q
- 185/55R15 86R XL
- 185/60R15 88R XL
- 185/65R15 92R XL
- 195/60R15 92H XL
- 195/65R15 95H XL

16"

- 195/55R16 87H
- 205/55R16 91H
- 205/60R16 96H XL
- 215/55R16 97R XL
- 215/60R16 99R XL
- 215/65R16 98R
- 225/60R16 102R XL

17"

- 215/45R17 87R
- 215/55R17 98R XL
- 225/45R17 94H XL
- 225/55R17 101R
- 235/45R17 97R XL

18"

- 225/40R18 92Q XL
- 245/40R18 97Q XL
- 245/45R18 100Q XL

19"

- 245/45R19 102V XL

EU labeling	Rolling resistance	Wet grip	Noise
	E	D-E	tba



Compact



Sedan